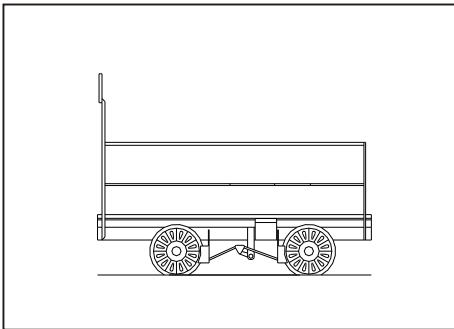


Wickham Type 27 Gangers Trolley

The common motorized trolley seen all over BR zipping along the tracks or parked up on a couple of rails at right angles to the running lines.

Etched in nickel silver kit includes bearings and wheels to make a rolling model.

Provision is made for motorizing the kit by providing top hat bearings. The choice of drive is left to the individual.

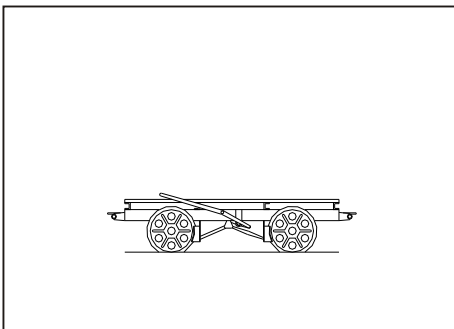


Wickham Type 17 Gangers Trolley

The common motorized trolley built from 1930 and used by the big four. Many lasted into BR and were modified to have a roof and enclosed rear.

Etched in nickel silver kit includes bearings and wheels to make a rolling model.

Provision is made for motorizing the kit by providing top hat bearings. The choice of drive is left to the individual.



Wickham Type 27 Flat Trailer

A type 27 trailer. This can be used behind the ganger's trolley or powered by men pushing.

Kit is etched in nickel silver and includes bearings and wheels.

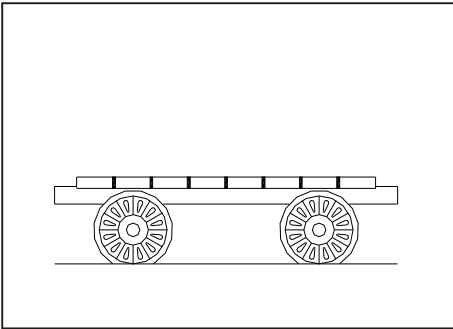
Can also be used behind the Type 17 by reducing the width slightly.



'Lady Margaret'

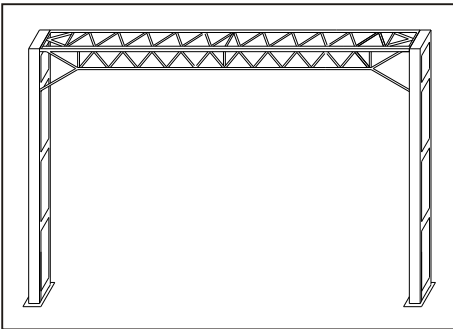
GWR No. 1308

In 1929 'Lady Margaret' was rebuilt at Swindon. This included raising the boiler and fitting a GWR style cab and boiler fittings. The engine was returned to Oswestry where she remained until withdrawn in 1948.



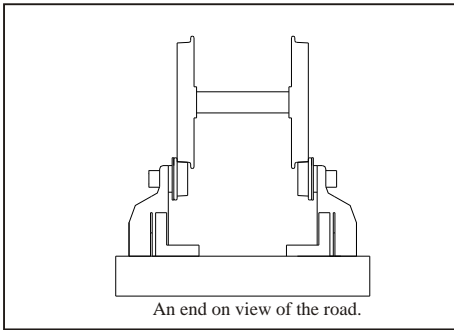
Platelayers' Hand Trolley (old)

A small hand trolley as seen all over the railways. These are the wheelbarrows of the railways. Able to move the chairs, fishplates and tools needed to maintain the track, yet light enough to dump off the track when finished with. Kit models the all wood trolleys used from the 1920's. Kit is etched in nickel silver and includes wheels.



25kV Catenary Supports

Supports to model the 25kV catenary as installed on the West Coast main line and suburban lines north of London. Light portal supports are available, capable of being extended to span up to 8 tracks. Portal includes cross girder and legs. Kits are a brass etch.



Rolling Road

A test bed to run in a steam or diesel engine. Takes from an 0-4-0 to a 2-10-0 or 1 Co Co 1 diesel. Road can be set to any gauge between 12mm and 21mm. Roller support slide along the two guides to suit the wheelbase of a loco under test.

Road is a kit and requires assembly and a base, (mdf or plastic) .

Industrial Name and Numberplates

7160 Nos. 2, 4, 6 & 7

7161 Fire Queen, Sir Charles, & Victory,
7162 Princess Mary, The Earl & Harlech
Castle

7163 Powys, Katie & Fiona

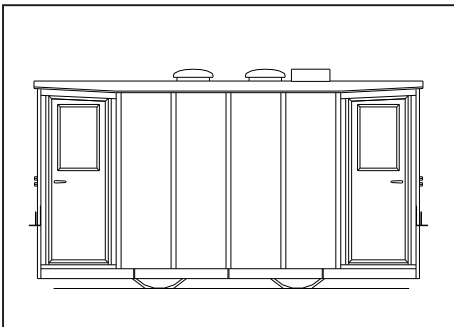
7164 Scooby, James & Tyrone



'THE ECLIPSE' 7mm narrow

Converted from a Bagnall 0-4-0ST in 1927 this electric loco survived the closure of the quarry to be displayed at Llechwedd slate museum.

Kit can be motorised with a Spud or a scale chassis (supplied in kit). To complete needs, paint, transfers, spud or wheels, motor, gears, crankpins and pickups.



PB&SSR ELECTRIC LOCO 7mm narrow

These locomotives were built for the Portmadoc, Beddgelert and Sth Snowdon Railway (later WHR), 5 by Ganz of Hungary, 5 by Bruce Peebles and Co. of Glasgow. They were scrapped during WW1.

Kit can be motorised with a Spud or a scale chassis (inc. in kit). To complete needs, paint, transfers, spud or wheels, motor, gears, crankpins and pickups.